



VIPER 140 TURBINE CONVERSION KIT MANUAL

Please read this user manual carefully, it contains instructions for the correct assembly of the turbine conversion kit.

Thank you for purchase, we hope you enjoy your new Airplane.
For sales and info inquiries please e-mail sales@harlock-rc.com

Inside the box:

- Inox exhaust pipe
- Fiberglass drillmask
- Complete fuel tank with cap and screw
- Screws



Viper 140 is perfect for turbine from 4 to 5kg

NOTES FOR ASSEMBLY

Please refer to this manual for assembly instructions for this turbine conversion kit.

Each step is based on the work done in the previous step. Changing the order of assembly may result in additional or unnecessary steps.

START ASSEMBLY

Exhaust pipe predisposition:

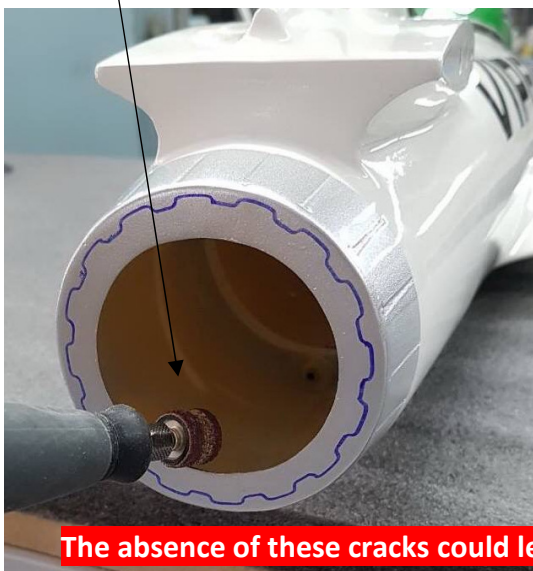
Fix with scotch tape the fiberglass template



Mark with felt-tip pen and remove the template



Cut the internal area



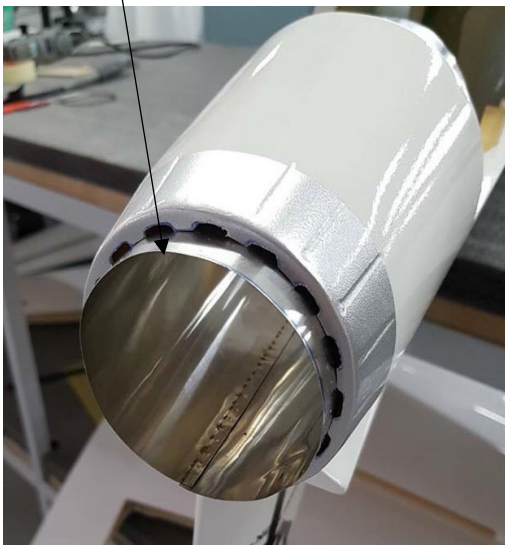
It is extremely important that the work is done exactly as illustrated to ensure the aircraft proper operation



The absence of these cracks could lead to overheating and in some cases to burn down.

Exhaust pipe installation:

Insert the exhaust pipe until comes out about 10mm



Insert and screw the four screws



Fuel tank and turbine position:

Please position the fuel tank like this photo, anyhow the tank backside must be in contact with the bayonet. Ensure the tank with velcro and plastic bands.



Please position the turbine like this scheme, the backside part must be go inside the exhaust pipe from 20 to 30mm.

